

SUPERFICIE LOTTO = 4.901,00 mq
SURFACE LOT

PLANIMETRIA GENERALE
GENERAL PLAN

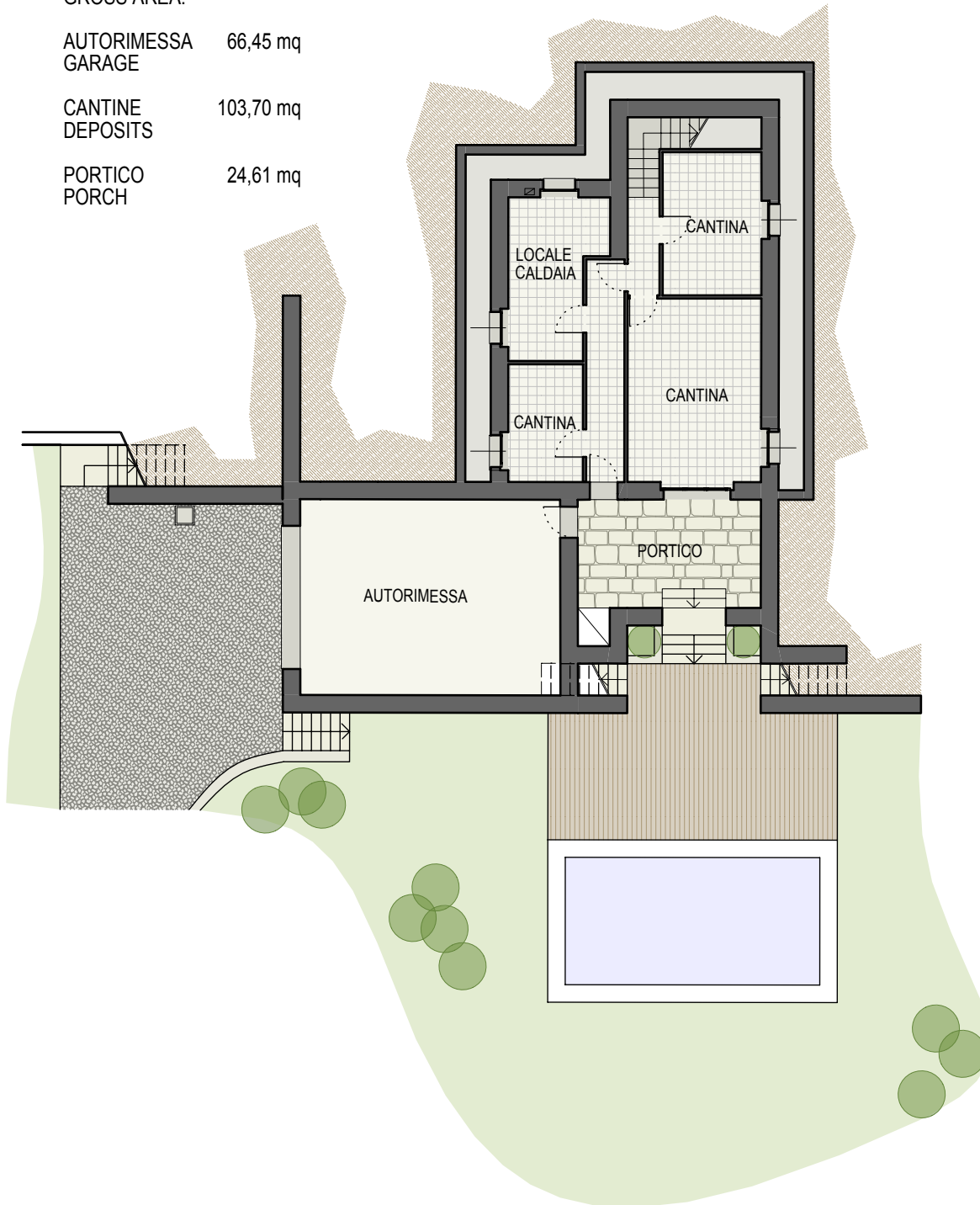
VILLA A: "LA LOGGIA"

SUPERFICI LORDE:
GROSS AREA:

AUTORIMESSA GARAGE 66,45 mq

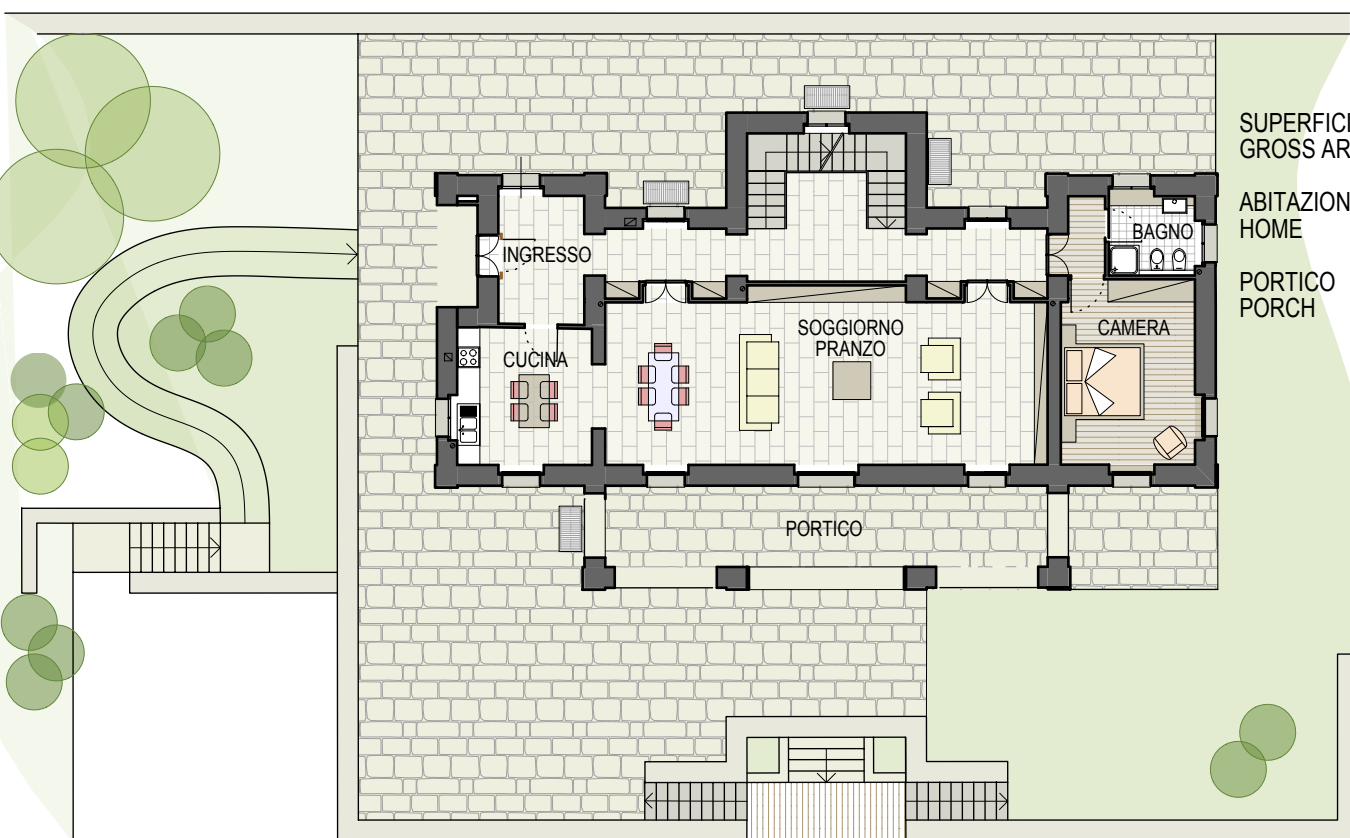
CANTINE DEPOSITS 103,70 mq

PORTICO PORCH 24,61 mq



PIANO SEMINTERRATO
BASEMENT FLOOR

VILLA A: "LA LOGGIA"



SUPERFICI LORDE:
GROSS AREA:

ABITAZIONE HOME 169,47 mq

PORTICO PORCH 34,52 mq

PIANO TERRA
GROUND FLOOR

VILLA A: "LA LOGGIA"



SUPERFICI LORDE:
GROSS AREA:

ABITAZIONE HOME 130,82 mq

TERRAZZI TERRACES 78,28 mq

PIANO PRIMO
FIRST FLOOR

VILLA A: "LA LOGGIA"